

To further simplify preparation, your matwell can be templated, and all sections supplied pre-cut and shaped to the exact requirements by our UK factory. Not only does this reduce time and effort onsite, but it also significantly reduces wastage. Alternatively, we can supply to any length and depth ready for a contractor to cut when required.

INTRA carriers are high-quality, thick aluminium extrusions that are much easier to work with than other, flimsier constructions. It's also worth noting no special tools are required; just what most contractors already have available; a chop saw, jigsaw, and circular saw. There's no need to invest in new gear.

Installation – like a jigsaw puzzle, only easier

Some contractors may not realise how easy it is to install INTRAsystems' matting. Our experts do the groundwork, so every drawing and layout plan makes installation as easy as child play – satisfying even. Every element is provided and clearly labelled, so it's literally like a jigsaw, you just put the plan together. Fast, accurate, no fitter certifications or special knowledge required.

Sometimes, it boils down to the actual person installing on-site, interpreting detailed or complicated instructions can be a headache. The team at INTRA carried out extensive user testing to ensure its installation 'maps' are user-friendly

Behaviour under pressure

Finally, we take a brief look at one of the key

performance factors to consider when selecting the right entrance matting product. How the system will respond to the movement of heavy loads.

With tension-wire and some plank systems, the connection between sections within the matting isn't as positive as the INTRA tongue-and-groove profile.

Over time this can grow loose and rattle, potentially causing issues with extremely heavy or unbalanced loads, for example fully loaded, motorised pump trucks in supermarkets. Under this type of pressure, mat sections will bow or start to work their way out of the mat well. Wheels get stuck and transported loads become unstable, creating health and safety risks.

By contrast, INTRAsystems matting products are intelligently engineered to respond adaptively, enabling better movement of heavy loads. Sections will undulate flexibly under pressure allowing weight to be transferred smoothly across, however well



INTRAsystems says it wants to make entrance matting more accessible

balanced or spread the load is. 'Install better entrances with INTRAsystems' So, next time an entrance matting project comes up, bring INTRAsystems onboard and let us advise you on the right product specification for the application, knowing you and your clients will be supported every step of the way. For those who still prefer to subcontract out their entrance matting, INTRA can recommend an excellent partner from our network of specialist mat installers across the UK and Ireland. ■

www.intrasystems.co.uk

Entrance matting inspired by nature – by choosing natural and sustainable materials you don't have to then be limited in the colours you choose. After all, the natural world is full of beautiful and varied colours that can be explored in design.

Why do we often think of natural and sustainable products as being dull or plain in colour when nature itself offers so much colour and design?

Do you struggle to find the colour you really want when it comes to the entrance matting? Do you think you have to stick with the usual grey or beige in order to tick off the natural or sustainable box? This is bound to happen when the majority of flooring manufacturers don't offer the colours you would like to use for your project.

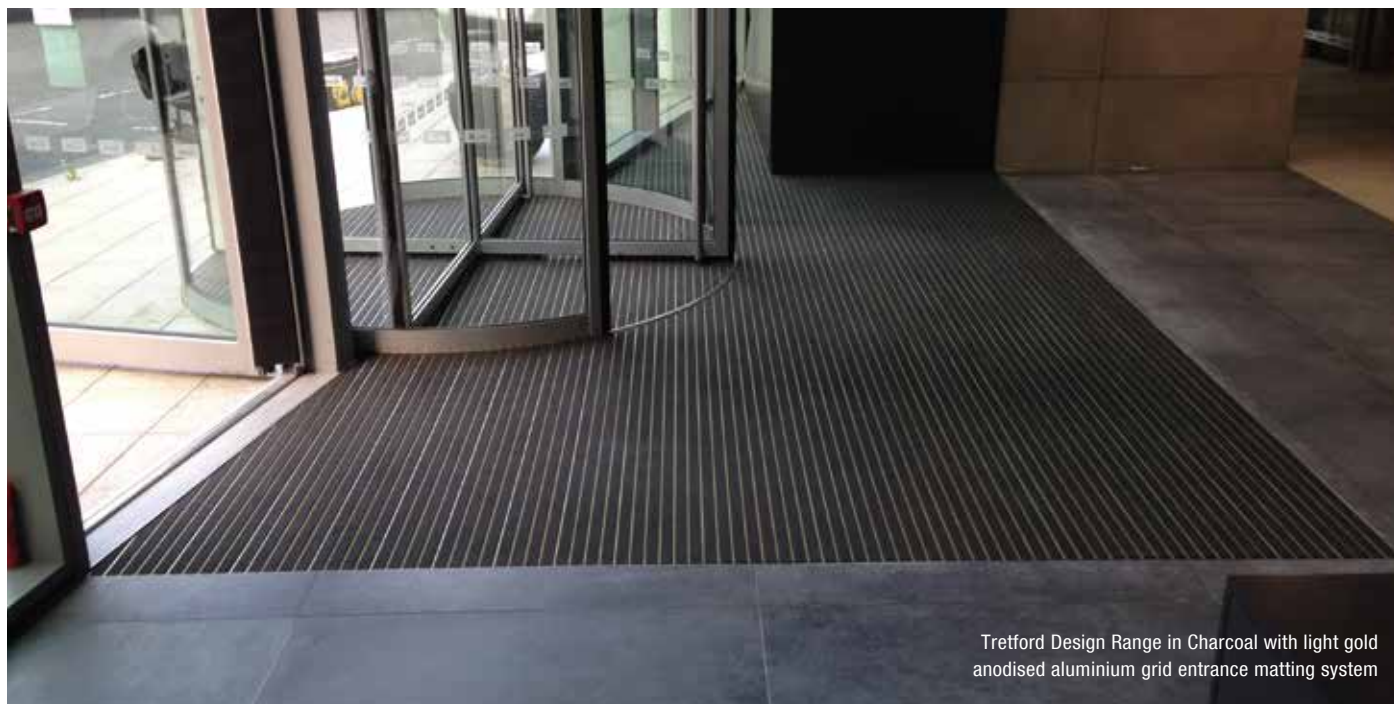
EMS entrance matting is different, we love colour and therefore from the very beginning, EMS has designed and manufactured entrance matting in as many colours as possible.

EMS offers a fabulous selection of entrance matting to suit all of your client's needs. Whether you are looking for subtle or bold colours in recycled, man-made, or sustainable and natural materials, EMS have the solution. EMS specialise in sustainable colourful commercial entrance matting systems.

EMS entrance matting comprises of a 100% recycled solid >



EMS Tretford Design Range



Tretford Design Range in Charcoal with light gold anodised aluminium grid entrance matting system

aluminium grid system - open or closed interlocking metal bases with specifically designed debris channels for maximum scrapping and dirt removal. The aluminium is available in a standard silver mill finish or anodised metallic colours in three shades of gold and bronze or contemporary black and gunmetal grey finishes. Anodised aluminium can add a lift to the infill material colour or add a contemporary backwash, these aluminium colour options work brilliantly with logos and patterns.

The 100% recycled aluminium angle frames designed for recessed entrance matting or ramp edged frames for surface mounted entrance matting can be anodised in matching colours to add a more professional finish and clean lines to your entrance matting. Every entrance matting system is manufactured with a combination of infill materials. Choose from five ranges and over 60 colours.

Making a good first impression is obviously very important in business, and yet the entrance matting is often left to the last minute or given less time for design than other parts of the building. By doing this you could be missing an opportunity to influence the first impression of the people entering the building and that includes your client's business or service. Therefore, if you choose an entrance mat that is not only effective in removing dirt and moisture but also highlights and compliments your interior design, you can instantly affect their impression of your business.

Colour and design has always been at the forefront of EMS Ltd, the first



EMS Tretford Design Range - Dark gold anodising

product range – EMS Colortread is still in production and popular with many of our customers, providing durable, eye catching and colourful entrance matting. EMS Colortread entrance matting consists of a solid interlocking 100% recycled aluminium grid system base combined with a great selection of infill materials as well as colourful scraper bars.

All EMS entrance matting ranges offer replaceable infill strips – fantastic for complimenting new trends, interior colour schemes, brand changes. Not only a sustainable way to update your entrance matting by replacing worn out strips, it is also a fraction of the cost of replacing a completely new entrance matting system.

One of the most popular ranges is the EMS Tretford Design range. EMS Tretford Design range is specified and trusted by many of our regular and new customers including well-known retail and hospitality brands. This entrance matting infill material is natural and sustainable, made

from ethically sourced goat hair which would have otherwise been discarded. This material is hard wearing, absorbent, naturally dirt repellent and adds a luxurious texture to the entrance matting. 60 beautiful colours including several undyed colours to choose from, this colour palette makes Tretford a great choice if you are looking for a specific colour, a colourful logo, matching or complimentary colour to blend into your interior colour scheme and want a sustainable entrance matting system.

There are many colours and endless design combinations available to you with EMS's entrance matting ranges.

Specify and install with confidence - please call or email our experienced sales team or visit our website to order your samples and start designing your new entrance mat. ■

01205 761757
info@entrance-matting.com
www.entrance-matting.com