



EMS entrance matting and barrier matting systems are manufactured to the highest standards using the most technically advanced fibres, processes, colour, texture and design to suit every application.

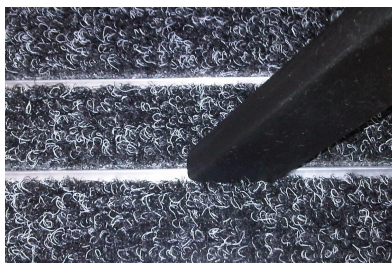
**To ensure your EMS matting systems retain a high level of appearance and performance, implement a Programme of cleaning care as soon as possible after installation.**

## EMS CLEANING CARE

Entrance and barrier matting has the ability to conceal soilage and as a result can appear to be clean when it is not. By implementing the following preventative measures into your cleaning regime you will ensure that your matting retains its appearance and efficiency.

### 1. Vacuuming

It is vital to vacuum as part of a daily regime using a high wattage unit. This agitates pile, removes dry soilage – dust, dirt, and grit. It will also reduce fibre abrasion and wear.



The innovative debris channels collect dust, dirt, and debris and retain it below the top surface of the mat. Weekly cleaning with a nozzle attachment will ensure they remain working efficiently.

FOR MORE INFORMATION CALL 01205 761757

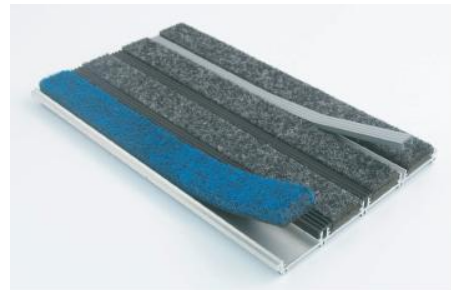
## 2. Spot Removal



Spots and spills typically account for approximately 5-10% of soiling. Failure to remove unsightly marks on a regular basis will lead to a decline in overall appearance and increase the likelihood of permanent staining. For the best results use an approved spotting kit. **DO NOT SCRUB**

Chewing gum can be removed by freeze spraying or with a proprietary chewing gum remover and then scraped or combed out of the matting. This should be done before the full cleaning process is started.

All EMS entrance grid systems have the added advantage of replacement strips. Should a stain/chewing gum be irremovable the infill strip can be exchanged for new.



## 3. Periodic Maintenance

'Crisis cleaning' i.e leaving cleaning to the point where it appears dirty and tired is an outmoded concept and a false economy. EMS would recommend a programmed 6 monthly maintenance routine. Best results can be achieved by the periodic use of a spray extraction carpet cleaning machine.

The use of a mild detergent (neutral pH) cleaning solution in the carpet-cleaning machine should loosen ingrained soiling and aid the removal of oils and grease. More stubborn stains should be treated with a solvent-based spot remover prior to re-cleaning with the detergent solution.

